

specifications

TYPE Condo Row/Townhouse

LEVELS 2

YEAR BUILT 1976

SQUARE FEET 1,466

BEDROOMS 4

BATHROOMS

4 Piece Baths 1

2 Piece Baths 1

LAUNDRY Basement

DRIVEWAY PARKING 1

GARAGE PARKING 1

FRONT EXPOSURE North

HEAT SOURCE Natural Gas

EST. RENTAL INCOME \$3,300

2023 PROPERTY TAXES \$2,329

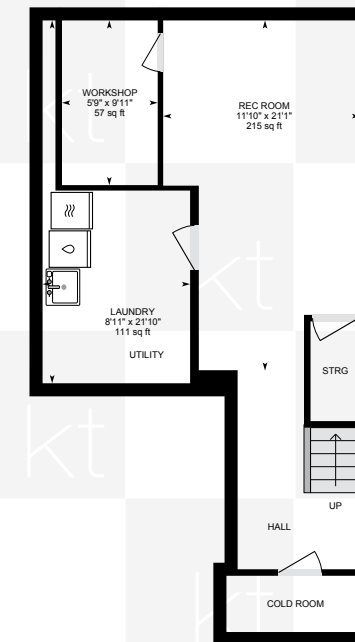
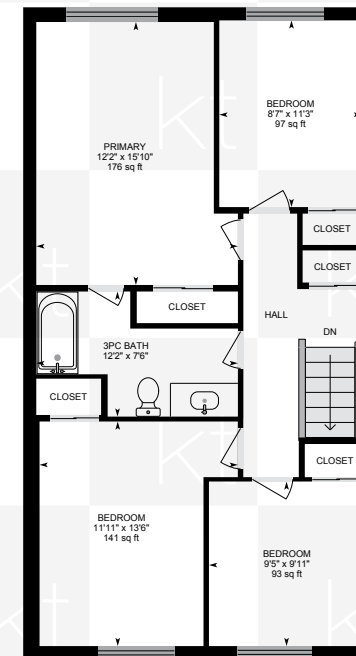
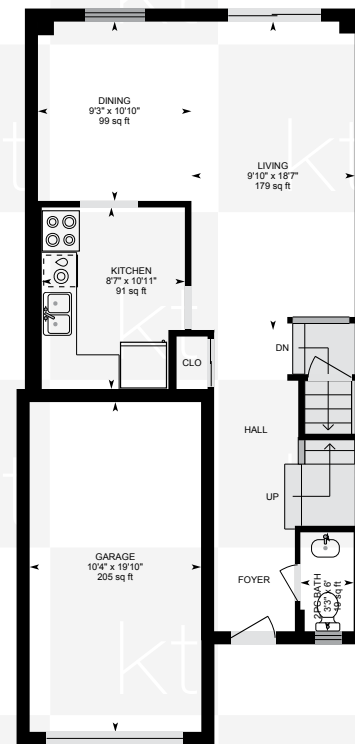
MAINTENANCE FEES \$437/mo

Building Insurance

Common Elements

Visitor's Parking

Water



27-481 PITFIELD RD

Measurements and calculations are approximate
To be used as guidelines only



*Room sizes, year built, lot dimensions, taxes and all other specifications are approximate.
Square footage source: Floorplan. Buyers and/or their agent are responsible for determining exact figures.