

specifications

TYPE Detached

LEVELS 2

YEAR BUILT 1978

SQUARE FEET 2,723

BEDROOMS 5+2

BATHROOMS

5 Piece Baths 1

4 Piece Baths 1

3 Piece Baths 1+1

2 Piece Baths 1

LAUNDRY Upper & Lower

DRIVEWAY PARKING 3

GARAGE PARKING 1

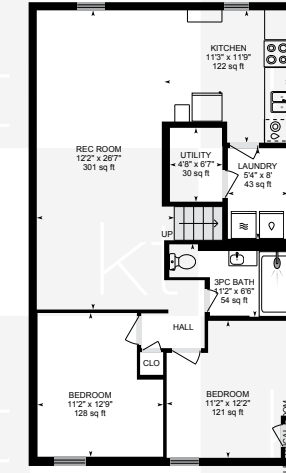
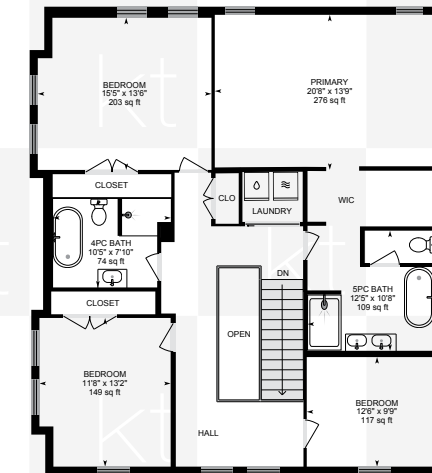
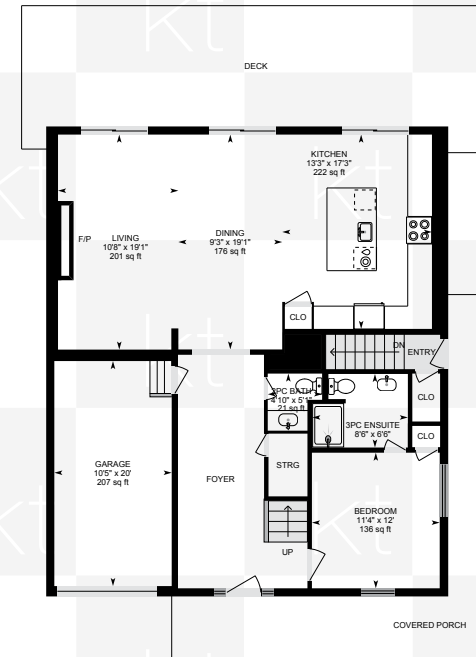
LOT Pie

Frontage: 33.8 ft
Rear Width: 95.41 ft
Depth: 101.73 ft and 117.76 ft

FRONT EXPOSURE North East

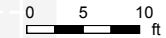
2022 PROPERTY TAXES \$6,401.45

HEAT SOURCE Forced Air/Gas



564 BROCK COURT

Measurements and calculations are approximate
To be used as guidelines only



*Room sizes, year built, lot dimensions, taxes and all other specifications are approximate.
Square footage source: Floorplan. Buyers and/or their agent are responsible for determining exact figures.