

specifications

TYPE Townhouse

LEVELS 2

YEAR BUILT 2012

SQUARE FEET 1,425

BEDROOMS 3

BATHROOMS

4 Piece Baths 1

3 Piece Baths 1

2 Piece Baths 2

LAUNDRY Basement

DRIVEWAY PARKING 2

GARAGE PARKING 1

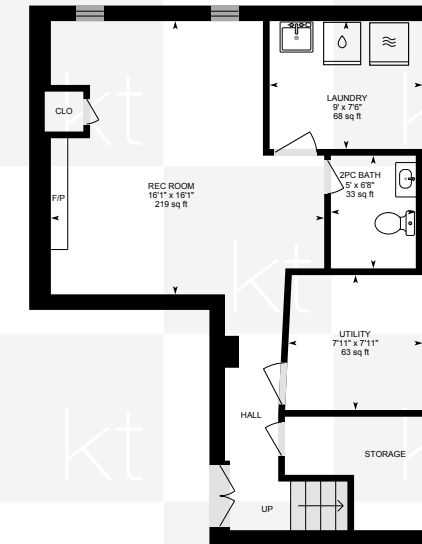
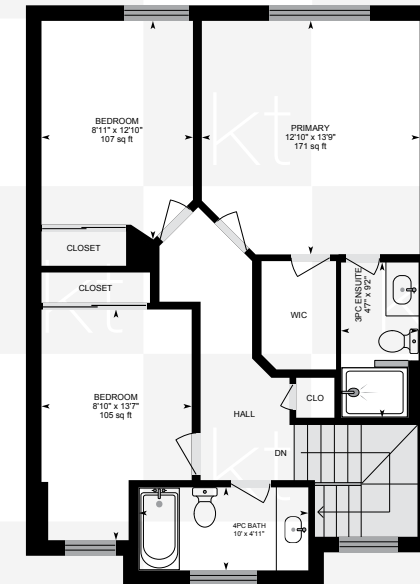
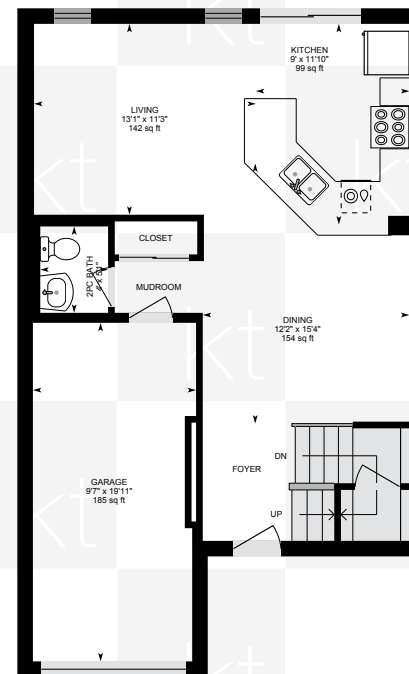
LOT Frontage: 23.00 feet
Depth: 80.38 feet

FRONT EXPOSURE North-East

2021 PROPERTY TAXES \$3,021

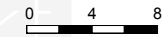
HEAT SOURCE Forced Air

EST. RENTAL INCOME \$2,600



1038 STEMMAN PLACE

Measurements and calculations are approximate
To be used as guidelines only



*Room sizes, year built, lot dimensions, taxes and all other specifications are approximate.
Square footage source: Floorplan. Buyers and/or their agent are responsible for determining exact figures.