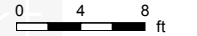


specifications

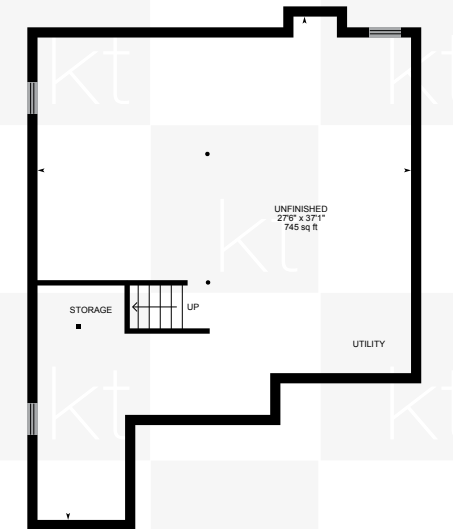
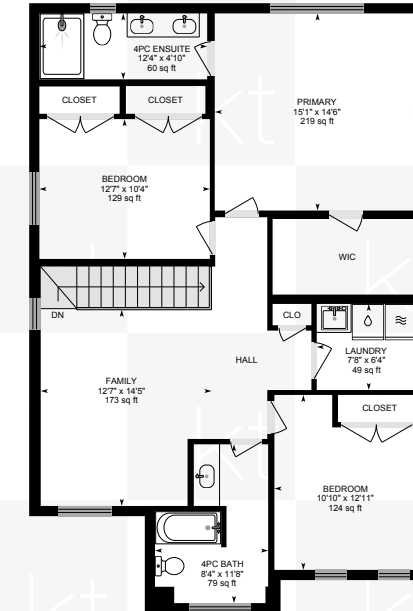
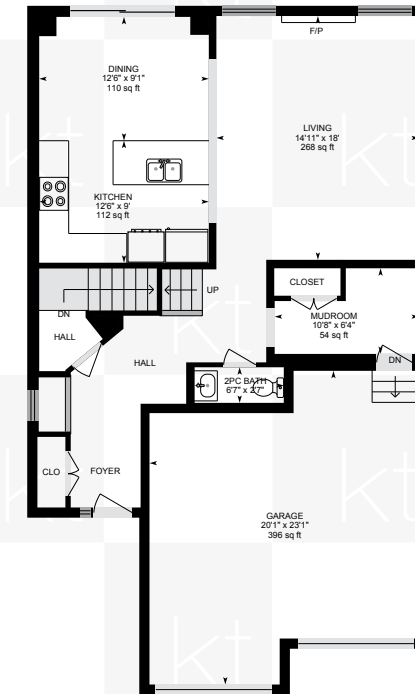
1214 MCEACHERN COURT

Measurements and calculations are approximate
To be used as guidelines only



TYPE	Detached
LEVELS	2
YEAR BUILT	2017
SQUARE FEET	2156 sq.ft.
BEDROOMS	3
BATHROOMS	
4 Piece Baths	2
2 Piece Baths	1
LAUNDRY	upper level

DRIVEWAY PARKING	3
GARAGE PARKING	2
LOT	Frontage: 36.9 feet Depth: 88.58 feet
FRONT EXPOSURE	East
2021 PROPERTY TAX	\$4,093
EST. RENTAL INCOME	\$3,200



*Room sizes, year built, lot dimensions, taxes and all other specifications are approximate.
Square footage source: Floorplan. Buyers and/or their agent are responsible for determining exact figures.