

FEATURES

8921 FIFTH LINE, HALTON HILLS

Ground Floor

- Three Bedrooms | Three Bathrooms
- Foyer with tiled floor
- Solid oak front door
- Living room
 - Antique doors from the original Georgetown Canada Post
 - Sliding glass doors to elevated balcony with ravine views
 - Wood burning fireplace with brick surround, wood storage and large stone mantel and hearth
 - Vaulted ceiling
 - Sconce lighting
 - Built-in bookshelves
 - Included flat-screen, wall-mounted television
- Hallway with skylight and wide-plank pine floors
- Bedroom two and three with vaulted ceiling and Bay windows
- Double-wide linen closet
- Three-piece main bathroom with walk-in shower
- Master bedroom w/ wrap around windows providing picturesque, unobstructed views of the woodlot and ravine, walk-out to balcony and large walk-in closet
- 4pc. Master Ensuite w/ heated floor, walk-in shower & skylight
- Mudroom with separate entrance from covered porch
- Two piece washroom
- Dining area with fireplace and nine-foot tall windows including glass-sliding doors w/ transom windows
- Glass sliding doors to rear balcony

Kitchen

- Addition built in 1995 (est.) by Charleston Homes
- Twelve-foot Vaulted ceilings
- Raised-panel cabinetry package
- Upper cabinets with valence, crown and under cabinet lighting
- Extended uppers over refrigerator
- Peninsula with raised breakfast bar
- Island with prep-sink, granite counter and additional storage
- Samsung® over-the-range microwave
- GE® Profile Performance electric range
- LG® French door, bottom freezer fridge w/ ice/water dispenser
- Miele® built-in dishwasher
- Microwave shelf in island with included second microwave

Miscellaneous

- Partial new roof in 2015
- Furnace (2010)
- 200AMP Electrical panel
- New septic system (2018 ~ \$50,000)
- Hardwired camera system with monitor and hard drive
- Two-acre wired invisible dog fence
- Water filtration system (Sediment, Carbon & UV)
- Sugar Maple patch for Grade 1 maple syrup production
- 16 Mile Creek - tributary cold spring fed
- Owned water heater and water softener

Lower Level

- One Bedroom | 2 Bathrooms
- Laminate flooring
- Bedroom with ensuite incl. double-sink vanity with sconce lighting and large walk-in shower with frame-less glass door
- Two piece bathroom

- Living room w/ fireplace including rustic stone surround
- Wet bar with granite counter, single basin sink and built-in stainless steel beverage centre
- Office nook
- Track-mounted privacy door
- Laundry room with included washer/dryer
- 150 year old antique reclaimed barn beams
- Large storage room

Kitchen

- Granite counter tops
- GE® stainless steel built-in dishwasher
- GE® French door, bottom-freezer refrigerator
- Samsung® over-the-range microwave
- GE® stainless steel, flat-top electric range
- Upper cabinets with valence
- Glass tiled feature wall
- Island w/ granite counter, breakfast bar & Pot & Pan drawer
- Pantry and additional storage

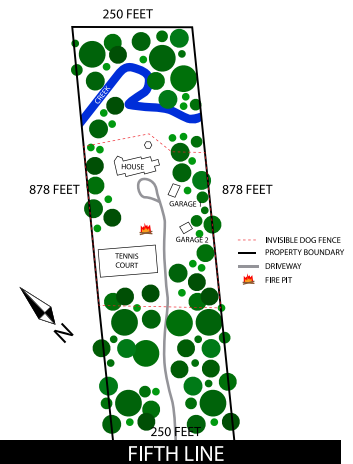
Outside

- Panabode log construction
- Single-car detached garage
- Second detached oversized single-car garage/workshop with second level storage and balcony
- Five-hundred foot (est.) tree-lined driveway w/ roundabout
- Firepit and wood storage
- Tennis court with fencing and net (resurfacing required)
- Extensive stone walkway, patio and steps to backyard with enclosed iron gate/fence
- Covered front and side porch
- Utility room under master bedroom
- Winding pathway on North side of house to ravine and creek

Specifications

Type:	Detached Bungalow
Exposure:	South-West
Year Built:	1964
Square Feet:	
Above Grade:	2,768
Incl. Basement:	4,888
Bedrooms:	3 + 1
Bathrooms:	
4 Piece Baths:	2
3 Piece Baths:	1
2 Piece Baths:	2
Total:	5
2020 Property Tax:	\$7,701
Heating Type:	Forced Air
Heat Source:	Oil
Fireplaces:	3
Type:	Wood (x3)
Water Source:	Well
Septic:	New 2018

Property Layout



* Buyer and/or their agent to verify all details. Property layout is for illustrative purposes only, not to scale.